

# **EFFECT OF DIFFERENT WHITENING ORAL RINSES ON DENTAL ENAMEL DEMINERALIZED WITH A COLA BEVERAGE; IN VITRO**

---

***Cecilia Carlota Barrera Ortega***

Phd - Research Laboratory in Nano and Dental

Biomaterials. Faculty of Higher Studies Iztacala (FESI). Specialization Pediatric Dentistry, "Head of the academic section of the Acatlan Dental Clinic". National Autonomous University

of Mexico (UNAM)

State of Mexico, Mexico.

<https://orcid.org/0000-0003-2369-6402>

***Rosalinda Joseline Loza Ornelas***

Research Laboratory in Nano and Dental Biomaterials. Faculty of Higher Studies Iztacala (FESI). National Autonomous University

of Mexico (UNAM)

State of Mexico, Mexico.

***Samuel Eloy Morales Gonzalez***

Research Laboratory in Nano and Dental Biomaterials. Faculty of Higher Studies Iztacala (FESI). National Autonomous University

of Mexico (UNAM)

State of Mexico, Mexico.

***Sandra Elizabeth Rodil Posada***

PhD - Materials Research Institute. National Autonomous University of Mexico (UNAM) México City, México.

ORCID 0000-0002-0275-4418

All content in this magazine is licensed under a Creative Commons Attribution License. Attribution-Non-Commercial-Non-Derivatives 4.0 International (CC BY-NC-ND 4.0).



**Abstract: Objective:** Determine the effect of three whitening mouthwashes on dental enamel demineralized with a cola beverage, evaluating surface roughness and color. **Materials and methods:** Ninety impacted third molars were sectioned mesiodistally to obtain 180 enamel surfaces. They were divided into 6 experimental groups: Scope-Crest® (SO), Luminous White Colgate® (LW), 3D-Whitening Oral-B® (3DW), Whitening-Extreme Listerine® (WE), Initial lesion group (IL), every group was submitted to an initial lesion (96h-pH 2.8), and a healthy enamel group (HE). All groups were put through a daily pH cycle, alternating between an immersion in a cola beverage for 1.5 hours at a pH of 2.8 and artificial saliva for 22.5 hours at a pH of 7.0, simulating oral conditions during 7, 14, 21, and 28 days. Roughness was measured using an optic profile-meter and color was evaluated with a Colormeter CIELAB®. Two-way ANOVA and Tukey (post-hoc)  $p < 0.05$  with Graphpad-8.0 were used for statistical analysis. **Results:** WE showed less roughness in mm (0.69), followed by LW (0.74), and 3DW (0.92), in color 3WE obtained the whitest color  $\Delta E^*$  ( $10.83 \pm 0.1$ ), followed by WE ( $11.9 \pm 1.1$ ), then LW ( $12.2 \pm 1.5$ ), and finally SO ( $38.3 \pm 3.1$ ). **Conclusions:** 3WE had the most whitening effect, however, it also produced the most roughness due to demineralization of the enamel. In contrast LW obtained a less whitening effect but presented less roughness, that is to say, less affectation of the enamel. **Keywords:** color, roughness, mouthwash, dental whitening, demineralization

## INTRODUCTION

In today's day and age having whiter teeth is a priority for most patients. That is why many over the counter products have surfaced as an alternative to conventional bleaching done in the dental office. Products like toothpaste, gels, strips and oral rinses addition with whitening

agents offer a simple, fast, and affordable way to achieve a whiter smile. However, there is not enough evidence that shows that these products work the same or better than the products used professionally in a clinical setting.

Tooth color is mainly determined by dentine and modified by the thickness and transparency of enamel. Pigments in a biofilm can also influence the overall color of teeth. These pigments can be classified as intrinsic or extrinsic stains depending on the source.

The process of whitening teeth consists in the application of a whitening agent over the dental enamel which can cause secondary effects such as hyper sensibility, gingivitis, throat irritation, gastric irritation, and changes in the surface of the enamel.

The use of mouthwash dates back to about 4000 years, apart from water they can contain, antimicrobials, salts and on occasion alcohol which can cause dehydration of the buccal mucosa, this can lead to a diminished flow of saliva and elevate the risk of developing caries.

Since then, other ingredients have been added to these mouthwashes, the most common, hydrogen peroxide which has shown has whitening properties, making it a very useful ingredient.<sup>44</sup>

A study concluded that a mouthwash containing hydrogen peroxide (Listerine whitening extreme) presented a whitening effect in comparison to those that did not have hydrogen peroxide in the formula.<sup>55</sup>

Other ingredients added are usually sodium fluoride, low concentrations of pyrophosphate, triphosphate, hexametaphosphate salts, and sodium bicarbonate. The purpose of these agents is to protect the tooth surface from staining and to remove stains already present. Polyphosphates are widely known to bind to proteins in dental biofilm, by doing so this chemical compound helps remove stains from teeth.<sup>41,20</sup>

Sodium hexametaphosphate is added to rinses to combat tartar and surface stains, which benefits prevention and elimination. One of the potential advantages of high molecular weight condensed phosphate analogues, such as sodium hexametaphosphate, is increased inhibitory activity to prevent crystallization or chromogenic staining.<sup>48</sup>

Sodium hexametaphosphate can alter the salivary biofilm on the tooth surface, creating a more hydrophilic tooth surface, this allows for greater desorption and diffusion of surface chromogen into saliva, thereby reducing overall extrinsic staining.<sup>49</sup>

Pyrophosphate ion is a salt with chelating activity, chelating agents are known to retard calculus formation and remove them once they have formed. In addition, chelating agents can, in principle, remove stains by attaching to surfaces of the teeth. <sup>48</sup>

A cyclic pH model is a model that provides constant controlled changes, simulating the conditions present in the oral cavity, the purpose of the cyclical pH method is the reproduction of demineralization and remineralization conditions that can occur in the oral cavity.<sup>54</sup>

There is little evidence that these products and ingredients work, so it is important to determine the effect of these mouthwashes on surface enamel roughness and color with prolonged use, in an environment similar to the oral cavity.

The purpose of this work is to determine the effect of different mouthwashes addition with sodium fluoride, hydrogen peroxide and other ingredients that help prevent stains on dental enamel. Using a cola beverage as a demineralizing solution in a cyclic pH cycle to determine change in color and roughness, during and after treatment. The null hypothesis of these research is that the use of whitening mouthwashes will not modify roughness or color of dental enamel demineralized with

cola beverage in cyclic pH conditions.

## **MATERIALS AND METHODS**

### **SAMPLE PREPARATION**

The samples were obtained by maxillofacial surgeons extracted either for preventive or orthodontic purposes. 90 retained inferior third molars without caries or structural defects were selected and stored in deionized water in an incubator at 36°C until ready to use.

Once the samples were obtained, they were sectioned in a mesiodistal direction with a fine diamond disc (Germany Brasseler Diamond 910 <20,000 rpm, California, U.S.™) under constant irrigation, obtaining a total of 180 working surfaces. The work surfaces were then conditioned, removing soft tissue with Gracey curettes (7/8,11/12,13/14). The pulp space was blocked out with wax in order to obtain a flat working surface, acid resistant varnish (Revlon™) was applied to the lingual and buccal working surfaces and covered from the cervical line to the apical third of different colors to distinguish each group.

Prophylaxis was carried out on all enamel surfaces with a non-fluoridated prophylactic toothpaste.

### **INITIAL LESION**

An initial lesion was made on 90 work surfaces by immersing the samples in a demineralizing solution (Coca-Cola®) with a pH of 2.8, corroborated by a pH-meter (Science Med SM-25CW Meter) for 96 hours. They were stored in an incubator at a controlled temperature. After 96 hours the samples were removed from the incubator, with a noticeable change in color in all of them.

### **ARTIFICIAL SALIVA**

Artificial saliva was made every 4 days, using one liter of deionized water in a beaker while stirring with a magnetic

stirrer (SCIOLOGEX®, MS-H280-Pro). Vijaya Lakshmi's composition for artificial saliva was followed, until a pH of 6.9 was obtained and then stored in an amber glass bottle at room temperature.<sup>29</sup>

## PH CYCLE

A pH cycle consists in immersing the samples in a sequence of remineralizing and demineralizing solutions:

- For 1 hour and 30 minutes: The samples were immersed in a demineralizing solution (Coca-Cola®), at a pH of 2.8 at a temperature of 36°C.
- For 60 seconds: The samples were immersed in mouthwash, Luminous White (Colgate®), Whitening extreme (Listerine®), 3DWhite (Oral B®), and Scope (Crest®).
- For 22 hours and 30 minutes: They were stored in artificial saliva (remineralizing solution) with pH 6.75 at a temperature of 36°C.

After each change of solution, the samples were rinsed with deionized water.

## IMMERSION IN MOUTHWASH

20 ml of each mouthwash was added into 40 ml beakers, then submerged twice a day with intervals of 6 hours, simulating the time of each meal, and rotating movements were performed in a clockwise direction simulating mouth movements when using a mouthwash. The treatment was applied following this cycle every 24 hours for 7,14,21 and 28 days.

As a demineralizing solution, 40 ml of cola soft drink (Coca-Cola®) was used, submerging the samples for 1 hour and 30 minutes. The soft drink was emptied into each group, taking special care that the samples did not turn over, and that they all received the demineralizing solution equally.

At the end of the Coca-Cola® application, the samples were rinsed with deionized water

to continue with the second immersion of mouthwashes.

At the beginning and end of the experiment of 7, 14, 21 and 28 days, 16 LW surfaces, 16 3DW surfaces, 16 WE surfaces, 16 SO surfaces, 16 LI surfaces and 16 ES surfaces, were stored in deionized water in the incubator (Mettmert™) at 36°C, the samples were placed and fixed individually in acrylic squares to avoid movement. Subsequently, the work surfaces corresponding to 7, 14, 21 and 28 days of treatment were randomly selected to obtain the roughness of the dental enamel of each of the experimental groups.

## DATA ANALYSIS

The Shapiro-Wilk test was performed to analyze the distribution of the data of the roughness and color variables.

Levenes test was performed for the homogeneity of our data. ( $p < 0.05$ )

Two-way ANOVA was performed with treatment and time as factors (levels).

All statistical analyzes and graphs were performed with the GraphPad Software Prism 8.0® program for information processing with a value of  $p \leq 0.05$ .

## RESULTS

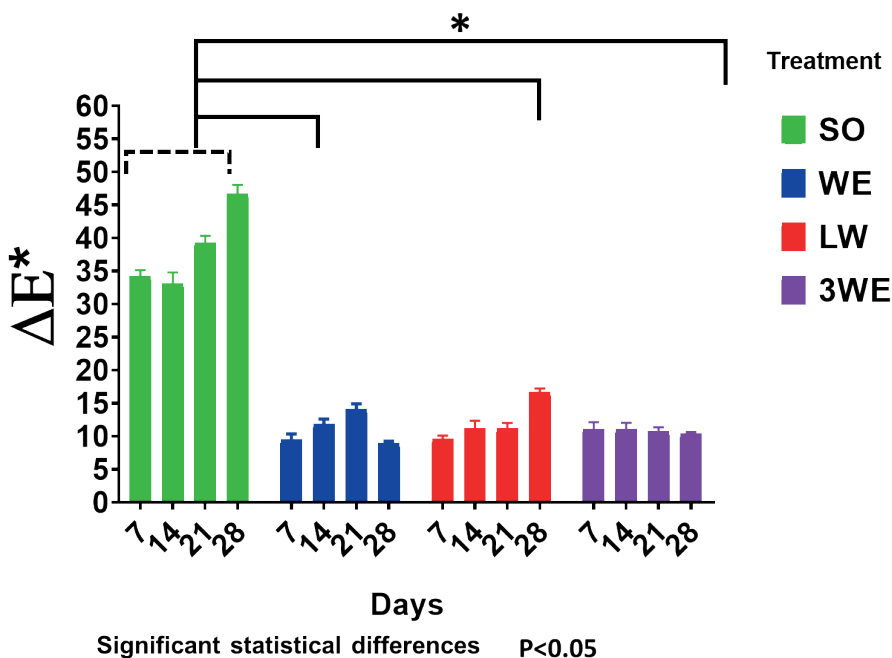
### COLOR

The color results were obtained at 7, 14, 21 and 28 days of treatment, taking the color of the samples by placing the colorimeter on the sample, each group was always compared to the healthy enamel group (ES). The coordinates were recorded using the colorimeter software, which represents the Cielab® color system. Both standard coordinates of the healthy enamel group and of the tested samples were observed.

To obtain the color difference, the numerical comparison of a sample with the standard coordinates must be made, indicating the differences in absolute color coordinates,

Luminous White COLGATE®	Sodium fluoride 0.05%, water. Glycerin, Propylene Glycol, Sorbitol, Tetrapotassium Pyrophosphate, Polyphosphate 20, Tetrasodium Pyrophosphate, Zinc Citrate, Copolymer, Benzyl Alcohol, Sodium Saccharin, Acid Blue, Dipentene.
3DWhite Oral B®	Water, glycerin, sodium hexametaphosphate, poloxamer 407, sodium bezolate, sodium lauryl sulfate, phosphoric acid, sucralose, saccharin, cinnamon, eugenol.
Whitening Extreme Listerine®	Water, 2.5% hydrogen peroxide, aroma, poloxamer 407, sodium saccharin, menthol, phosphoric acid, 100ppm sodium fluoride, sucralose
Scope Crest®	Active ingredient: 0.05 cetylpyridine hydrochloride, water, alcohol, glycerin, aroma, polysorbate 80, sodium saccharin, sodium benzoate, benzoic acid.

Table 1: Mouthwashes and Ingredients



Graph 1 shows the results of  $\Delta L$ ,  $\Delta a$ ,  $\Delta b$  and  $\Delta E$  of the changes presented by the samples during the cyclical pH for 7,14,21 and 28 days.

known as Delta ( $\Delta$ ). Deltas by  $L^*$  ( $\Delta L^*$ ),  $a^*$  ( $\Delta a^*$ ) and  $b^*$  ( $\Delta b^*$ ) which can be positive (+) or negative (-). The final result that indicates the total color difference is Delta E ( $\Delta E^*$ ), the result of which will always be positive.

The mouthwash used without a whitening agent (SO), obtained values of more than 35, having statistically significant differences with the rinses that do have an added whitening ingredient. The WE mouthwash produced a lower color change when performing the cyclical pH during the 28 days, being positive from the first 7 days of the cyclical pH, followed by the 3DW mouthwash, which remained stable in its  $\Delta E$  values. Group LW had a whitening effect for the first 14 days, but did not on days 21 and 28, on day 28 beginning to decrease its effectiveness.

In graph 2 the behavior of all experimental groups and control groups, that is, the Healthy Enamel group and the group with Initial Lesion can be observed. The color changes substantially due to the immersion in cola and it can be seen that the whitening mouthwashes have the effect of reducing extrinsic pigmentation compared to the initial lesion, but even so they do not resemble healthy enamel.

## ROUGHNESS

Roughness was measured using an optical profilometer, the enamel surfaces of all experimental groups were randomly tested, and 6 observations were obtained from each of the experimental groups; as well as the mean roughness ( $R_a$ ) and its standard deviation.

All experimental groups presented a loss of superficial enamel, and all differed from each other. Group SO did not have statistically significant differences with the WE group, in contrast it did have them with groups LW and 3DW, followed by group WE, which did not have statistically significant differences with group 3DW. Groups LW and 3DW did present

statistically significant differences.

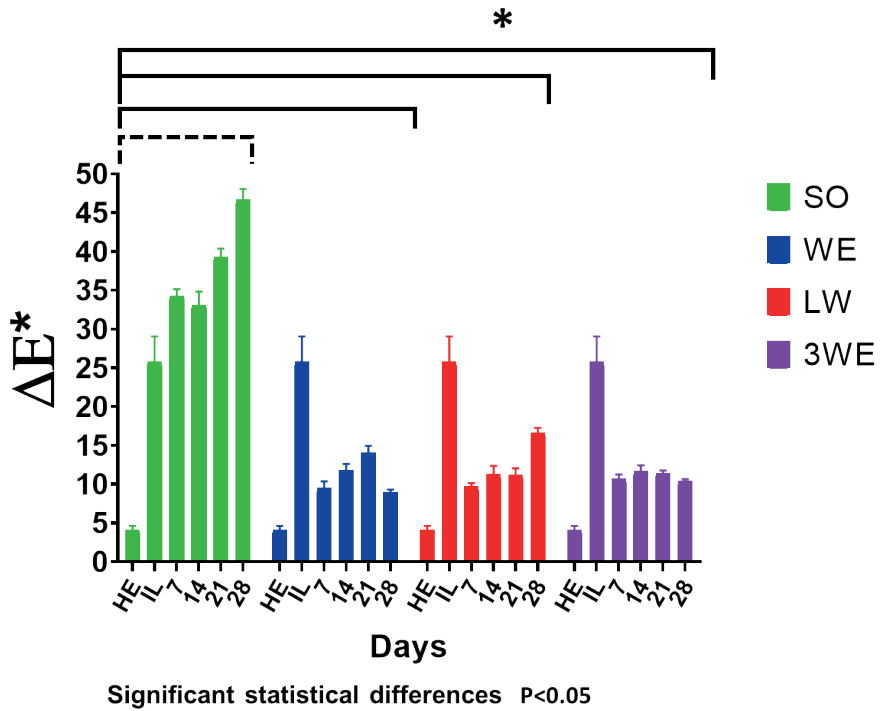
## DISCUSSION

The results of this study supported the hypothesis that the use of whitening mouthwashes will modify surface roughness and color of demineralized dental enamel.

In previous studies, such as the one carried out by Muhammet Karadas (71), he used 80 bovine teeth for his study, determining that they had a larger work area; however, in our study, retained mandibular third molars were used, as we intended to obtain the greatest similarity to the oral cavity.

Many substances have been used to produce stains in vitro, reviewing the literature Jaime et al (47) used an Orange II dye (methyl orange) to stain teeth, and thus determine the efficacy of hydrogen peroxide. Roncal Espinoza (74), in his study, applied black tea for three days to homogenize the color of the samples, and to evaluate different whitening rinses. Muhammet Karadas (75) immersed his samples in coffee for 24 hours, to analyze the effect of whitening mouthwashes and toothpastes, in this research, Coca-Cola soft drink was used, as it is the most consumed cola beverage in the world.

In some articles, different methods have been used to simulate the demineralization of dental enamel under cyclic pH conditions. In the study by Cavali (74), the cyclical pH consisted in immersing the specimens for 16 hours in a remineralizing solution with a pH of 7.0 and 8 hours in a demineralizing solution adjusting the pH to 4.5, for 8 days. In this study, wanting to have the greatest similarity to the oral cavity, the cyclical pH consisted of immersing the samples in remineralizing solution for 22.5 hours at a pH of 7 with artificial saliva, since in the oral cavity saliva acts as a remineralizing agent, and in demineralizing solution for 1 hour 30 minutes at a pH of 2.8. Due to the lower pH



Graph 2 shows the multiple comparisons with 2-way ANOVA and the Tukey post-hoc test by groups, the SO rinse did have statistically significant differences with the rest of the rinses, 3DW remained stable from day 7 to day 28, followed by WE and LW.

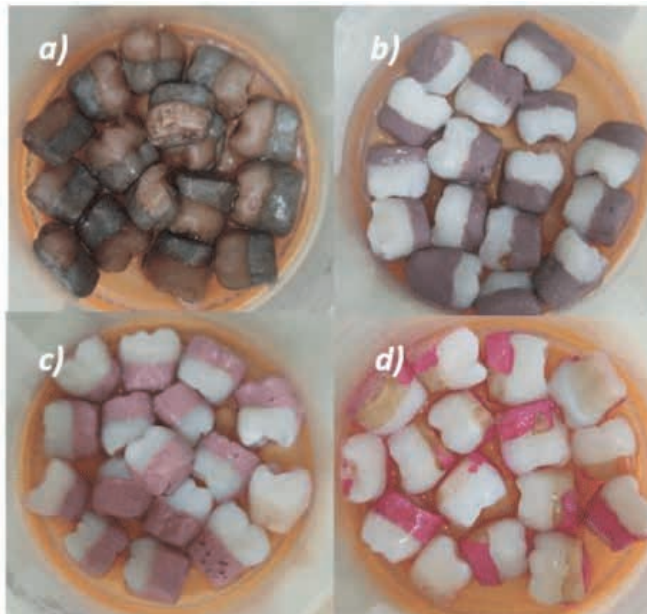


Fig. 1 Photograph of the four groups of oral rinses after treatment A) group Scope Crest (SO), B) group Colgate® Luminous White (LW), C) group Oral B® 3DWhite (3DW), and D) group Listerine® Whitening Extreme(WE).

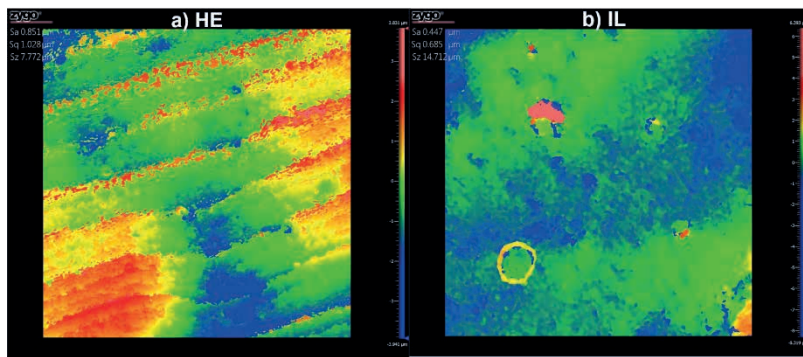


Fig. 2 Roughness image a) healthy enamel (HE), b) initial lesion (IL) or demineralized enamel with cola drink. Direct source.

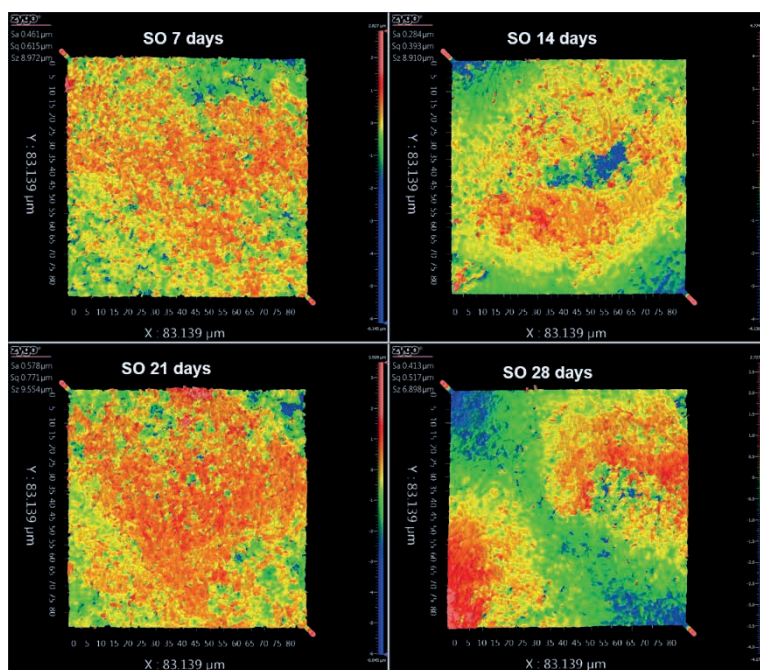


Fig.3 Surface roughness of dental enamel treated with Scope Crest® mouthwash 7, 14, 21 and 28 days. direct source



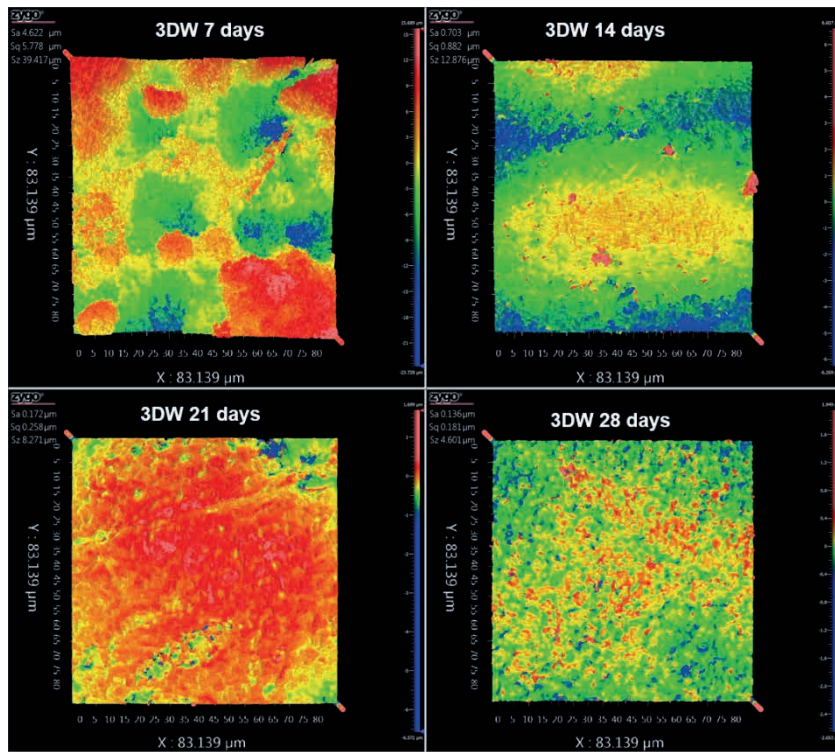


Fig 3 Roughness of dental enamel treated with 3DWhite Oral B® mouthwash 7, 14, 21 and 28 days of treatment. Direct source.

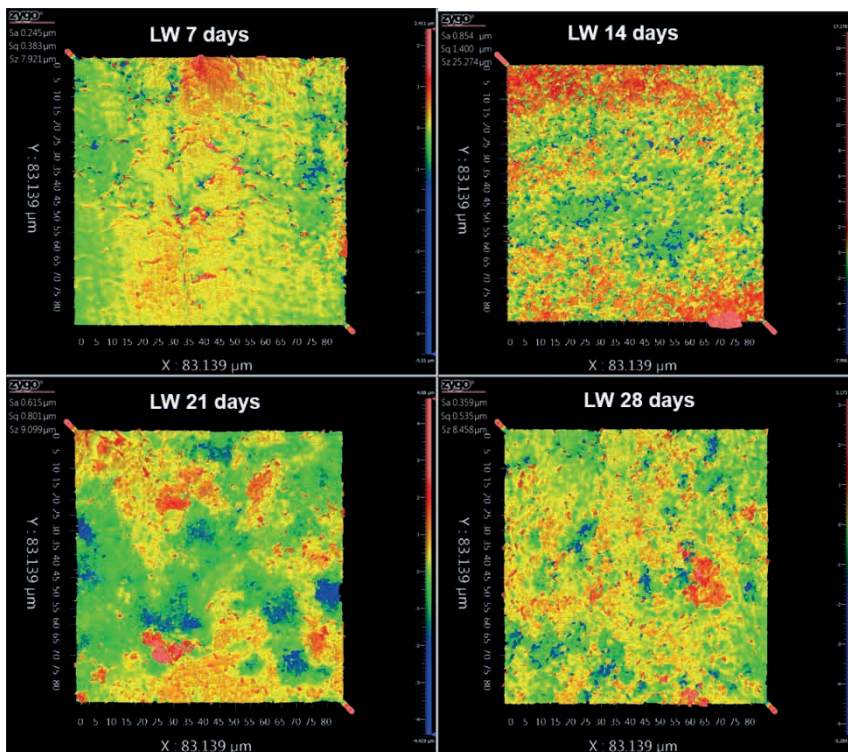


Fig. 5 Roughness of samples treated with Luminous White Colgate® mouthwash 7,14, 21 and 28 days of treatment. direct source.

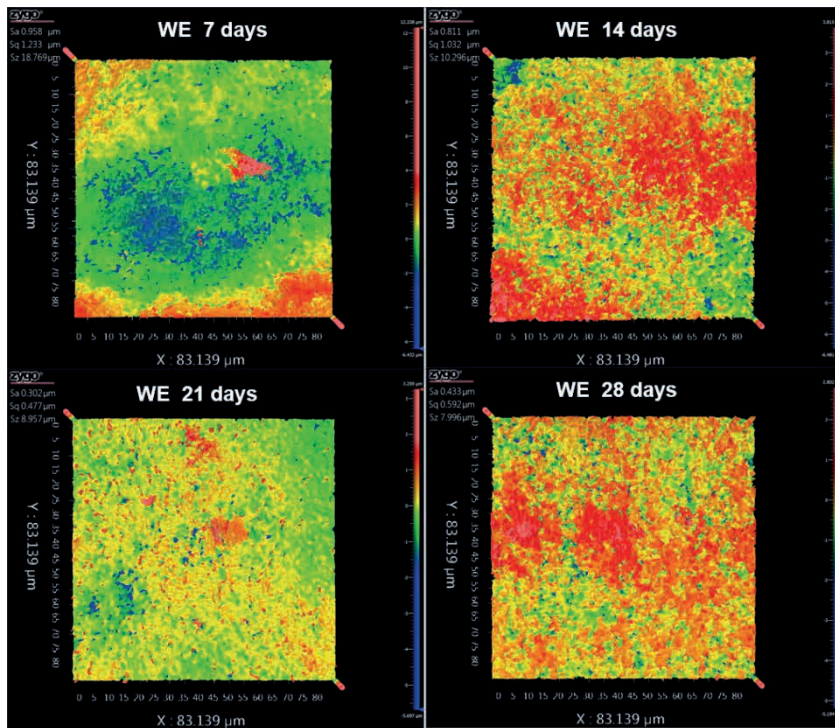
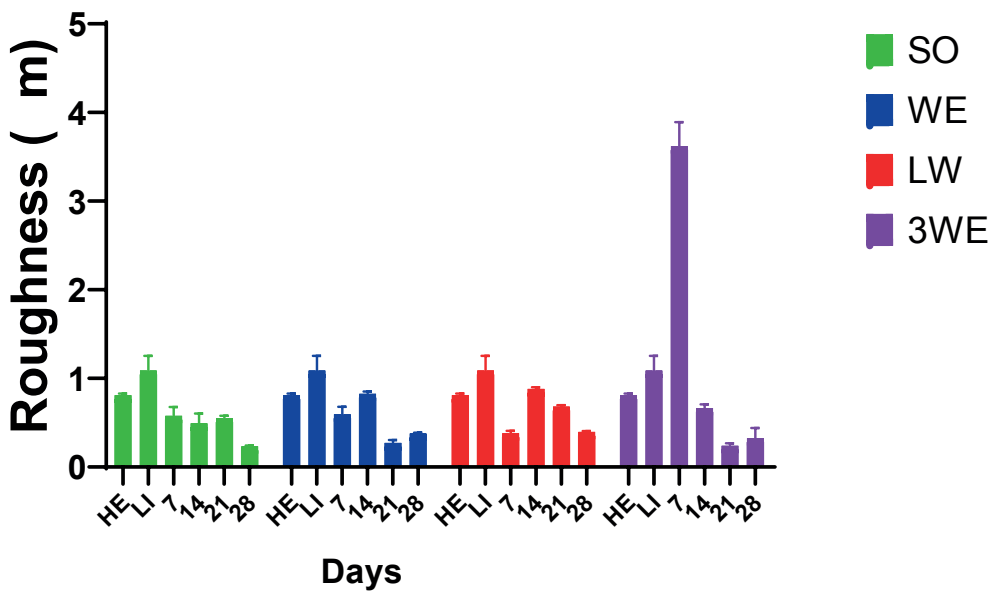
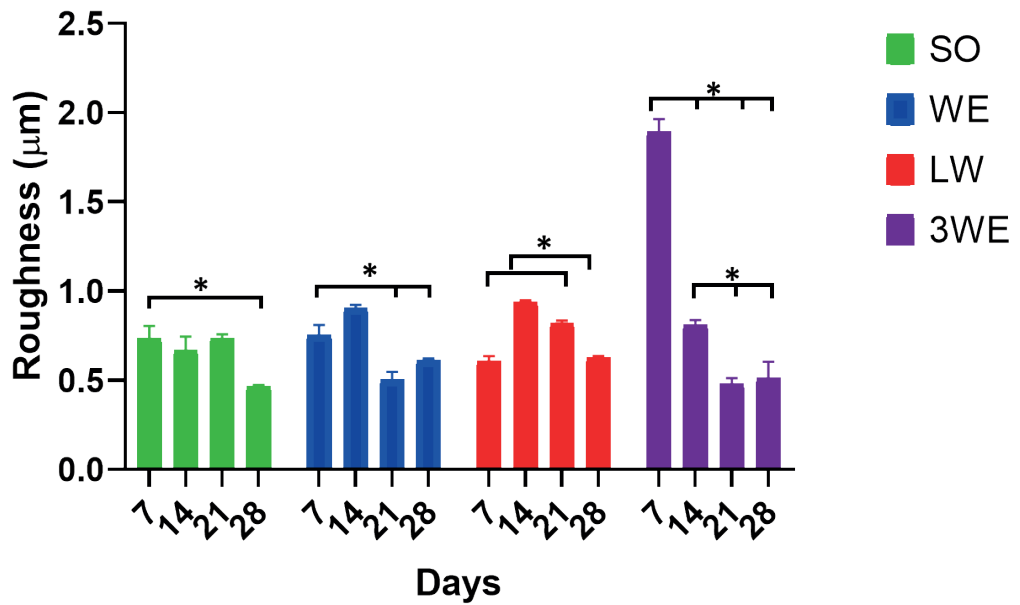


Fig 6. Roughness of samples treated with Whitening Extreme Listerine® mouthwash 7, 14, 21 and 28 days. Direct source.



Graph 3 shows the behavior of the experimental groups with the control groups, Healthy Enamel and Initial Lesion, and the results of the whitening mouthwashes.



Significant statistical differences P<0.05

Graph 4 shows the results only of the experimental groups and their significant differences between them. The distribution of the results of the roughness of the different experimental groups, where there were significant differences in the 3DW group at 7 days, and WE at 28 days are observed.

the samples were exposed for shorter times, this cyclical pH was carried out for 7,14,21 and 28 days.

Torres A. (74) mentioned that dental enamel samples in a demineralizing solution such as lactic acid at pH 3 artificially formed the incipient lesion of caries or clinically known as white spot in a period of 3 hours; while Chicaiza and Navarrete, (43), reported that their enamel samples in demineralizing solution of lactic acid at pH 2 artificially formed the white stain in a period of time of 50 min; However, when examining the dental enamel, they observed a total crumbling of the surface.

In the article by Santos (44), he mentions that all enamel samples used in the experimental study were demineralized with acid hydroxyethylcellulose, following the cyclical pH model. In this work, cola was used as it is the most consumed soft drink in the world. In addition, the whitening mouthwashes most purchased in shopping centers by consumers who, in addition to having the habit of ingesting carbonated beverages, also smoke.

Yamamoto (27) in his in vitro experimental work compared three types of drinks Coca Cola®, Coca Cola Cero® and Gatorade® on the surface of dental enamel, concluding that Coca-Cola® showed greater erosive effects and the greater the number of cycles exposed to Coca-Cola®, the greater the influence on the dental erosive process. In a study carried out by Van Eygen et al (30) they determined that even for a brief time the consumption of soft drinks can affect the structure of tooth enamel. In this experiment, Coca-Cola was used as a demineralizing solution due to its pH of 2.8, causing staining of the dental enamel and affecting the Scope mouthwash group the most, which did not contain any bleaching agent.

Favaro (36) in his study evaluated the

color, roughness and microhardness of the enamel, where he used various mouthwashes including LW and WE and determined that all groups had a loss of superficial enamel. In his study he used distilled water to store samples, because if artificial saliva was used, a protective salivary film could form, which could influence the roughness values. In this study, artificial saliva was used because the objective was to reproduce oral conditions, in a pH cycle.

In her roughness results, Favaro (36) mentions that the greatest loss of superficial enamel was caused by the WE, followed by the LW. In contrast, in these results, the greatest loss of superficial enamel was caused by the 3DW mouthwash followed by of the WE and LW.

It would be decisive to continue with the investigation on some properties such as the hardness of the enamel treated with whitening rinses, since, although the color improves, that is, it eliminates the extrinsic pigmentation of the enamel, the change in the roughness of the surface is an indicator of erosion, consequence of the use of whitening mouthwashes.

## CONCLUSIONS

The use/application of the three mouth rinses with whitening ingredients such as hydrogen peroxide, sodium pyrophosphate and sodium hexametaphosphate do eliminate extrinsic pigmentations, that is, they whiten demineralized dental enamel with cola soda.

The mouthwash with the greatest whitening effect was Listerine® Whitening Extreme (LW) which contains hydrogen peroxide at 2.5%, followed by 3DWhitening oral B® (3DW) with sodium hexametaphosphate, which is used for dental whitening, preventing extrinsic stains on the enamel, which maintained its efficacy from day 7 to day 28.

The mouthwash with sodium pyrophosphate Luminous White Colgate®

(LW) is effective in dental whitening only for the first 14 days, losing effectiveness on day 28.

The use of whitening mouthwashes does modify the surface roughness of the dental enamel. The 3DW mouthwash obtained a constant whitening effect from day 7 to day 28 of treatment, however, it was the roughest due to the mineral loss of the enamel.

The mouthwash WE obtained a similar whitening effect to 3DW, but it obtained less roughness, followed by the LW mouthwash, which presented a minor whitening effect and

less roughness, that is, less affectation on the enamel.

## **DISCLOSURE STATEMENTS**

“The authors do not have any financial interest in the companies whose materials are included in this article.”

## **ACKNOWLEDGEMENTS**

This work was supported by the DGAPA-PAPIIT IA-200421 and IA-202423 project.

## **REFERENCES**

A., Joiner. Tooth color: a review of the literature. *Journal of Dentistry*. 32, 2004, Vol. 3, 12.

Ahid A, Al- Shahrani. The ability of dual whitening anti-caries mouth rinses to remove staining and enhance caries lesion remineralization. *Journal of Dentistry*. 2020.

Alain Manuel, Chaple Gil, Fernández Godoy, Quintana Lisana. Técnica modificada de blanqueamiento de dientes vitales empleando DMC peróxido de hidrógeno al 35%. *Revista Habanera de Ciencias Médicas*. 2019, Vol. 18, 3.

Aljobair Asmaal. The Effect of Repeated Applications of Enamel Surface Treatment on In-Vitro Bovine Enamel Hardness After Multiple Exposures to Cola Drink. *Pakistan Oral & Dental Journal*. 1, 2010, Vol. 30, 10.

Almaguer, Villagomez Argelia,. *Ecología Oral*. [aut. libro] Almaguer Flores Argelia. ecología oral. s.l.: editorial Manuel Moderno, 2019.

Alshara S., Lippert G, J. Effectiveness and mode of action of whitening dentifrices on enamel extrinsic stains. *Clin, Oral Investing*. 18, 2014, Vol. 2, 563-569.

Anjum I, Jaffery S S, Fayyaz M,. Sugar Beverages and Dietary Sodas Impact on Brain Health: A Mini Literature Review. *cureus*. 6, 2018, Vol. 10.

Arreortua Y, De Leo Vargas G, Salgado M, evaluación de alteraciones visuales y su relación con el poder de discriminación en la toma de color dental en alumnos de odontología con luz artificial y natural. *Revista de Asociación Dental Mexicana*. 65, 2008, Vol. 29, 69 -74.

Attin T, Lennon A. Deposition of fluoride on enamel surfaces released from varnishes is limited to vicinity of fluoridation site. *Clinical Oral Investigations*. Mar 2017, Vol. 1, 11.

Benmehdi Salina, Riaboo Maria. Lesiones cervicales no cariosas y su Asociación con la periodontitis, periodoncia y osteointegración. 2009, Vol. 19, 3.

Berkovitz B.K, Holland G, R. *Oral Anatomy, Embriology and Histology*. Oral Anatomy, Embriology and Histology, 3 ed. New York: El Sevier Science, 2002.

- Betul Rahman, Sausan Alkawas, Elaf A. Comparative antiplaque and antigingivitic effectiveness of tea tree oil mouthwash and a cetylpyridinium chloride mouthwash: A randomized controlled crossover study. *Contemporary Clinical Dentistry*. 2014, Vol. 5, 4.
- Bray A, Jorge. Soft drink consumption and obesity: it is all about fructose. *Nutrition and metabolism*. 21, 2010, 51- 57.
- Buzalaf MA, Hannas AR, Magalhães AC, Rios D, Honório HM, Delbem. pH-cycling models for in vitro evaluation of the efficacy of fluoridated dentifrices for caries control: strengths and limitations. *s. J Appl Oral Sci* 18, 2010, 316-334.
- Carrillo Sánchez, Carlos. Desmineralización y remineralización. *REVISTA ADM*. Vol. LXVII, 1.
- Castellanos, Jaime E., Marín Gallón, Lina María, Úsuga Vacca, Margarita Viviana, Castiblanco Rubio, Gina Alejandra, Martignon Biermann, Stefanía. La remineralización del esmalte bajo el entendimiento actual de la caries dental. *Universitas Odontológica*. 2013;32, 49-59.
- Castillo Carmelo, Benitez Paez A, *Streptococcus dentisani* international journal of systematic and evolutionary microbiology. 64, 60-65.
- Cavalli Vanessa, Da Rosa Denisse. Effects of experimental bleaching agents on the mineral content of sound and demineralized enamels. *JAOS Journal of applied oral science*. 2018.
- Chai Y, Jiang X, Ito Y, Bringas P Jr, Han J, Rowitch DH, Soriano P, McMahon AP, Sucov. Fate of the mammalian cranial neural crest during tooth and mandibular morphogenesis. *Development*. 127, 2000, Vols. 2, 1671–1679.
- Chicaiza, G., Navarrete, N. Efecto de dos agentes remineralizantes en lesiones de mancha blanca: Estudio in vitro. *Rev.Digital*. Julio, 2017, Vol. 1, 18.
- Christiani J., Devecchi J.R. Color: Consideración en odontología e instrumentos para el registro. *revista de operatoria dental y biomateriales*. 2016, Vol. 5, 2.
- Contreras Cortes, Capetillo Hernandez Rosalia. Efecto erosivo que causan las bebidas carbonatadas, alcohólicas y rehidratantes al esmalte dental. *Revista Mexicana de Medicina Forense*. 2020, Vol. 5, 153-156.
- Cretescu I, Horhat R, Munteanu O, Capriță R. Evaluation of physical-chemical characteristics of commercially available fluoride mouth rinses. *Romanian Journal of Biophysics*. 27, 2017, Vol. 3, 81-88.
- Demarco F, F, Meireles S, Sarmiento H.R., Dantas R.V.F, Botero T, Tarquinio S.B.C., Erosion and abrasion on dental structures undergoing at-home bleaching, clinical, *Cosmetic and Investigational Dentistry*. 2011, Vol. 3, 45-52.
- Dodds MW, Johnson DA, Yeh CK. Health benefits of saliva: a review. *J Dent*. 3, 2005, 223 233.
- Eron, Yamamoto Colauto Toshio. Influence of three types of drinks on the surface of human dental enamel: in vitro study. *RGO - Rev Gaúcha Odontol., Porto Alegre.*, 2013, Vol. 61, 41-46.
- Favaro Jaqueline C, Ribeiro Edgar. Effect of mouth rinses on tooth enamel surface, *Journal of Oral Science*. 1, 2020, Vol. 62, 103 -106.
- Featherstone, J.D y Behrman, J.M & Bell, J.E. Effect of whole saliva components on enamel demineralization In vitro. *Rev. Oral Biol.Med.*; 4, 1993, Vol. 4, 357 - 62.
- Frazão Câmara João Victor, Pererira Santos Luine de Piava. Effect of tooth enamel staining by coffee consumption during at-home tooth bleaching with carbamide peroxide. *Revista de odontología*. 2018.
- Garcia F. In vitro evaluation of the whitening effect of mouth rinses containing hydrogen peroxide. *Braz Oral Res.*,3, 2012, Vol. 26, 269.

García GY, Torriente VJM, Oliveros OR, et al. Daños a la salud por consumo adictivo de Coca Cola™. Revista del Hospital Psiquiátrico de La Habana. 14, 2017, Vol. 3.

Gerlach R, W, Tucker, M, K. Clinical trial comparing hydrogen peroxide tooth whitening systems: strips vs rinses. *Compend Contin Educ Dent.* 12, 2005, 874.

Gomez de Ferraris, M.E. *Histología, Embriología e Ingeniería Tisular Bucodental.* s.l. Panamericana. 273-280.

Guilhem Lignon, Muriel, Arnaud, Berdal. L' email Un auto samblaje unique dans le monde du mineral. *medicina/ciencia.* 2015, 515-21.

Hinojosa - Rivera M, Reyes Melo M.E. La rugosidad de las superficies: Topometria. *Ingenierias.* 2001, Vol. 4, 11.

Humphrey SP, Williamson RT. A review of saliva: normal, flow, and function. *J Prosthet Dent.* 85, 2001, Vol. 161, 165.

Ibrahim Al-Amri, Roula Albounni, Sultan Binalrimal. Evaluation of the effect of soft drinks on the surface roughness of dental enamel in natural human teeth. *Restorative Dentistry, Riyadh Elm University.* 10, 2021, Vol. 1, 13.

Ivancakova R, Hogan MM, Harless JD, Wefel JS. Effect of fluoridated milk on progression of root surface lesions in vitro under pH cycling conditions. *37(3), 2003, Vols. 166-71., PMID: 12740538 .*

Jaime Ivone Maria Delima, Fabiana Mantanani Gomes France, Roberta Tarkany Basting. Efficacy of hydrogen-peroxide-based mouthwash in altering enamel color. *American Journal of Dentistry.* 1, February 2014, Vol. 27.

Jiang, X. Ma, Wang Y, Tong H. Investigation of the effects of hydrogen peroxide on human tooth enamel. *J. Biomed.* 13, 2008, Vol. 1, 014019.

Jiménez Jaime. El origen de la Coca-Cola®. *revista de ciencias UNAM.* 6, 1984, 36-37.

Johannes W. Rohen, Elke Lütjen-Drecoll. *Embriología funcional: una perspectiva desde la biología del desarrollo* 3° ed. España: Panamericana, 2007. 125.

Jussila M, Thesleff I. Signaling networks regulating tooth organogenesis and regeneration, and the specification of dental mesenchymal and epithelial cell lineages. *Cold Spring Harb Perspect Bio.* 4, 2012.

Karadad, M. Efficacy of mouthwashes containing Hydrogen Peroxide on tooth Whitening. *The Scientific World Journal* 2015.

Karadas, Muhammet. Efficacy of whitening oral rises and dentifrices on color stability of bleached teeth. *Acta Biomaterialia a Odontologica Scandinavica.,1, 2015, Vol. 1, 29-34.*

Korte A, Angelopoulou MV, Maroulakos G. Assessing. the Effect of Low Calorie Soda Beverages on Primary Tooth Enamel: An In Vitro Study. *J Clin Pediatr Dent.* 3, 2019, Vol. 8, 190-195.

Lacruz Rodrigo S. Habelitz Stefan, J. Wright Timothy, and Paine Michael. Dental Enamel formation and implications for oral health and disease. *Physiol Rev.* 10, May 3, 2017, Vol. 1, 152.

Lafuente David. Fisica del color y su utilidad en odontología. *Revista Científica Odontológica.* 1, 2008, Vol. 4, 10-13.

Larsen, M., Fejerskov, O. Chemical and structural challenges in remineralization of dental enamel lesions. *Scand. J. of Dental.* 4, 1989, Vol. 97, 285.

Lidia, Roncal Espinoza Rosa Josefina a & Tay Chu Jon. Aclaramiento Dental con Enjuagues de Libre Venta que Contienen Peróxido de Hidrógeno. *Int. J. Odonto stomat.* 12, 2018, Vol. 2, 121-124.

López-López, A., Castillo Carmelo, A., Ferrer, M. D., Simon-Soro, Á., & Mira, A. Health-Associated Niche Inhabitants as Oral Probiotics: The Case of *Streptococcus dentisani*. *Frontiers in Microbiology*. 81, Vol. 10.

Lussi A, Schlueter N, Rakhmatullina E, et al. Dental erosion-overview with emphasis on chemical and histopathological. *Caries Res*. 45, 2011, Vol. 2, 12.

Madrid, Real Academia Española. Diccionario de la lengua Española. 22a edición y 2001. diccionario de la lengua española. [En línea] [Citado el: 10 de julio de 2022.] Madrid, 2001.

Maiara, Rodrigues de Freitas. Eficacia y Efectos Adversos De Los Productos Blanqueadores De Venta Libre En Los Tejidos Dentales. *Frontiers in Dental Medicine*. 2021, Vol. 2, 2-3.

Małgorzata Skucha-Nowak, Tanasiewicz Marta. Natural and Controlled Demineralization for Study Purposes in Minimally Invasive Dentistry. *Adv Clin Exp Med*. 24, 2015, Vol. 5, 891–898.

Mendizabal Ruiz Jose. Blanqueamiento dental. tesis. 2005.

Missumi I, Noi K, Sugarwara K, Gonda S, Profile surface roughness measurement using metrological atomic force microscope and uncertainty evaluation. *Measurement*, 2015, Vol. 73.

Mondelli Lia, Garrido Gabriel, F.A. Piola Rizzante, Magalhães C, Soares Bombonatti, Ishikiriyama S, K. Do Different Bleaching Protocols Affect the Enamel Microhardness 9, 2019, Vol. 1, 25- 30.

Moreno Ruiz Ximena, Narvaez Carmen. Efecto In vitro de las bebidas refrescantes sobre la mineralización de la superficie del esmalte dentario de piezas permanentes extraídas. *Odontostomat*;. 5, 2011, Vol. 2, 157- 163.

Morona, Klein, Rodriguez. In vitro tooth Whitening effectiveness of whitening mouth rinses. *Brazilian Journal of Oral Sciences*. 2020, Vol. 19.

Muhammad Wasif Haq, Mehwish Batool. Efficacy of antiplaque mouthwashes A five - day clinical trial. *Caries Detection and Prevention*. 2010.

Nassau, Marcus RT. K. The measurement of color. In: *Color for Science, Art and Technology Elsevier Science*:1998, p. 34-91.

Nowark, Malgorzata Skucha. Natural and Controlled Demineralization . *dv Clin Exp Med*. 24, 2015, Vol. 5, 891-898.

Paramei, G.V, Color discrimination across four life decades assessed by the Cambridge Color test,. *Journal of the Optical Society of America*. 12, 2012, 290-297.

Pelegrim Fernandez, F, Whitening mouthwash containing hydrogen peroxide decreases enamel microhardness in vitro. *Brazilian Journal of Oral Sciences*. 2017, Vol. 16, 3-5.

Petersen Poul Erik, Ogawa Hiroshi. Prevention of dental caries through the use of fluoride -. *Community Dental Health*. 33, 2016, 66-68.

Ponvhe A, Bigerelle M, Anselme K. Relative influence of surface topography and surface chemistry on cell response to bone implant materials. Part 1: physical chemical effects. *Proc Inst Mech Eng H*,2010, Vol. 224.

Prado Rosas Sandra Georgina, Araiza Téllez Miguel Ángel, Valenzuela Espinoza Emilia. Eficiencia in vitro de compuestos fluorados en la remineralización. *Revista Odontológica Mexicana*. 2, 2014, Vol. 18, 96-103.

Ragain James C. A Review of color Science in Dentistry: Colorimetry and Color Space. *Symbiosis*. 2, 2016.

Rakesh Vadhe, Girish Parma, Shikha Kanodia. Basics of Color in Dentistry: A Review. *IOSR Journal of Dental and Medical Sciences*. 9, 2014, Vol. 13, 1.



Rawan Alkahtani, Simon Stone. A review on dental whitening. *Journal of Dentistry*. 2020, 1.

Redacción, Equipo de. Colutorios, enjuagues y elixeres bucales. s.l. El Sevier, 2001.

Reisha Rafeek, Gomez Andres. Xylitol and sorbitol effects on the microbiome of saliva and plaque. *Journal of Oral Microbiology*. 2018.

Reyes Gasga, J. Estudio del esmalte dental humano Por microscopia electrónica Y técnicas afines. *Rev. LatinAm. Met. Mat.* 2001, Vol. 21, 2, págs. 81-85.

Rodríguez E. La luz, el color y su percepción. *Estética en odontología Restauradora*. primera, ripano S.A, 2006., p. 48-67.

Roncal Espinoza Rosa Josefina, Tay Chu Lidia, Aclaramiento dental con enjuague de libre venta que contiene peroxido de hidrogeno, *Odontostomat*.,12, 2018, Vol. 2, 124.

Sabel N., A. Robertson, Nietzsche,3 and J. G. Noren. Demineralization of Enamel in Primary Second Molars Related to. *The Scientific World Journal*. 2012, 8.

Stevan Hinić, Bojan Petrović, Sanja Kojić, Nejra Omerović. Viscosity and mixing properties of artificial saliva and four different mouthwashes. *University of Novi Sad*. 11, 2022, Vol. 17.

Tanner, AC,R, Matheny, J. Cultivable Anaerobic Microbiota of severe early Childhood Caries. *Journal of Clinical Microbiology*. 49, 1464 -1473.

ten Cate JM, Duijsters. Alternating demineralization and remineralization of artificial enamel lesions. *Caries Res*. 10.1159/000260599, 1982; Vols. 16(3):201-10. Doi: PMID: 6953998.

Torres A. Evaluación in vitro, de la eficacia del barniz de fluoruro de sodio al 5% más fosfato tricálcico y resina infiltrante, en el tratamiento de las superficies lisas de piezas dentales permanentes, afectadas con caries incipientes. *Universidad Central del Ecuador*. 5, 2015, Vol. 1, 12.

Torres Daniela, Fuentes Ramon, Bornhardr Thomas. Erosión dental y sus posibles factores de riesgo en niños. *Elsevier*. 9, 2015, Vol. 1, 20-22.

Tredwin C, Naik S, Lewis N Scully C. Hydrogen peroxide tooth-whitening (Bleaching) products. *Br. Dent. J.* 7, 2006, Vol. 200, 371–376.

Vadher, Girish Parmar, Shikha Kanodia. Basics of Color in Dentistry: A Review. *IOSR Journal of Dental and Medical Sciences (IOSR-JDMS)*. 9, 2014, Vol. 13, 1.

van Eygen I, Vannet BV, Wehrbein H. Influencia de un refresco con bajo pH en las superficies del esmalte: un estudio in vitro. *Am J Orthod Dentofacial Orthop*. 2004, .03.036.

Vijaya Lakshmi Mudumba, Radhika Muppa, NCH Srinivas, Duddu Mahesh Kumar. Evaluation and Comparison of Changes in Microhardness of Primary and Permanent Enamel on Exposure to Acidic Center-filled Chewing Gum: An in vitro Study on-journals. 7, 2014, Vol. 1, 24-29.

Villegas A, Gomez D, Moreno F. Dispositivos electrónicos para reproducir el color en odontología, Revisión de literatura. *ResearchGate*. 2016, Vol. 54, 1.

Visscher M, Struik K.G, Optical Profilometry and its application to mechanically inaccessible surface's part 1: Principles of focus error detection. *Precision Engineering*. 1994, Vol. 3, 16.

Walkers Patricia, Bierock Aaron, Benefits of Sodium Hexametaphosphate- Containing Chewing Gum for Extrinsic Stain Inhibition. *Journal of Dental Hygiene*. 2004, Vol. 78, 4.

Walsh L, J. Safety issues relating to the use of hydrogen peroxide in dentistry, *Aust. Dent. J.* 2000, Vol. 4, 257- 269.

West N.X., Lussi A, Seong J, Hellwig E, Dentin hypersensitivity: pain mechanisms and etiology of exposed cervical dentin, *Clin. Oral Investig.* 17, 2013, 9- 19.

Young A, Amaechi BT, Dugmorea. Current erosion indices flawed or valid? *Clin Oral Investig.* 12, 2008, Vols. 59-63.

Zero DT, Lussi A., Etiology of enamel erosion - intrinsic factors; in Addy M, Embery G., *Tooth Wear and Sensitivity.* 2000, 121-139.